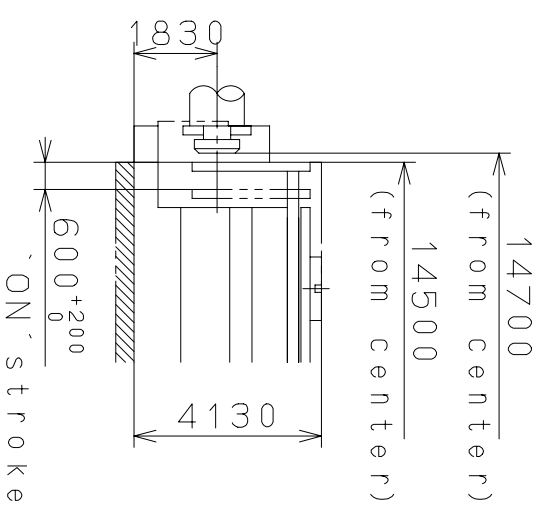
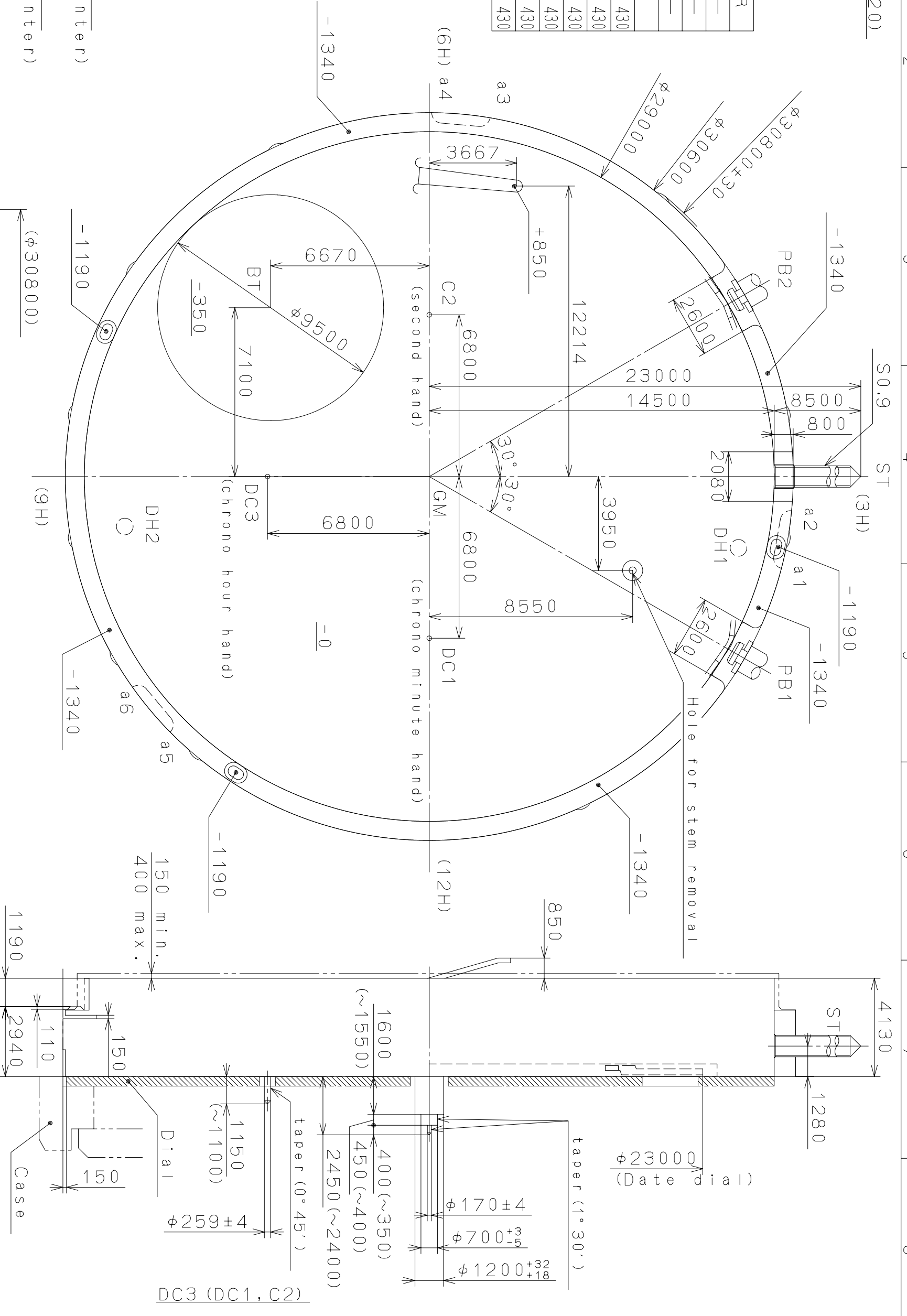
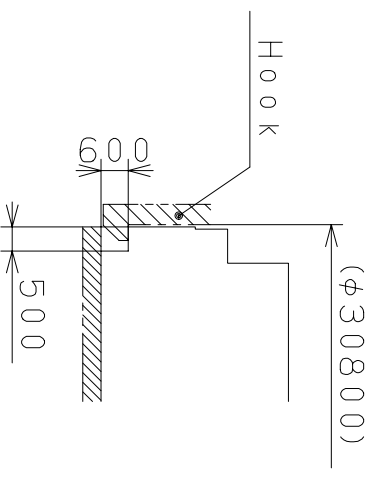


DH1~DH2=25816 (±20)
Stroke for PB
must be minimum
600⁺²⁰⁰ μm

Coordinates			
記号	X	Y	R
GM	0	0	—
DH1	3000	13000	—
DH2	2100	-12800	—
a1	3441	14908	430
a2	1865	15186	430
a3	-15151	2129	430
a4	-15291	535	430
a5	10434	-11190	430
a6	9208	-12219	430



Section PB1, 2



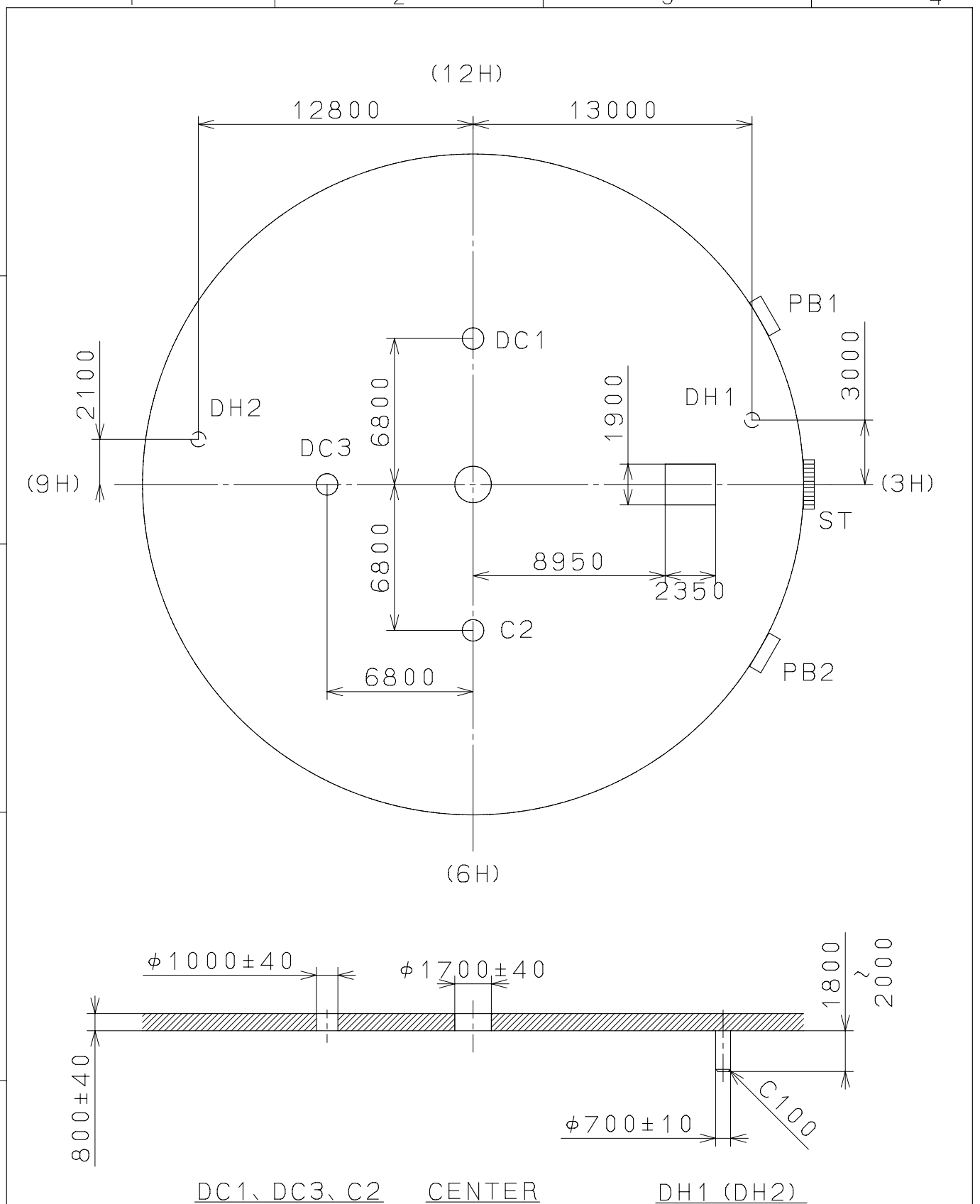
Section a1~a6

△	Quantity	1/1000 mm	Cal. NO. : OS1A
△	Unit	6 : 1	Parts No. :
△	Scale		
△	Date		
△	Drawn		
△	Checked	N. Suzuki	Name :
△	Approved		Frame for Case
△	Alterations		Drawing No. : OS1AC000
△	Date		
△	Description		
△	Appr.		
△	Material		
△	Heat Treatment		
△	Hardness		
△	Plating		
△	General Tolerances		
△	Dimensions		
△	Angles		

MIYOTA
CITIZEN WATCH CO., LTD. TOKYO, JAPAN

2008/02/27 (08:09:52)

This drawing is provisional and subject to our reconfirmation and/or revision without notice.



DC1, DC3, C2

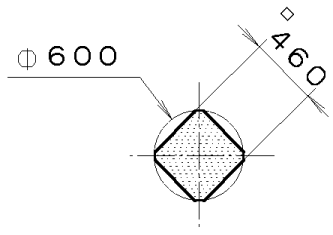
CENTER

DH1 (DH2)

△			Quantity		Cal.NO.:
△			Unit	1/1000mm	OS1A-00A
△			Scale	4:1	Parts No.:
△			Date		
△			Drawn		
Mark	Date	Description	Appro.	Checked	Name:
		Alterations		Approved	Indications for Dial
Material					Drawing No.: OS1AD000
Heat Treatment			General	Tolerances	MIYOTA
Hardness			Dimensions		
Plating			Angles		
					CITIZEN WATCH CO., LTD. TOKYO, JAPAN

This drawing is provisional and subject to our reconfirmation and/or revision without notice.

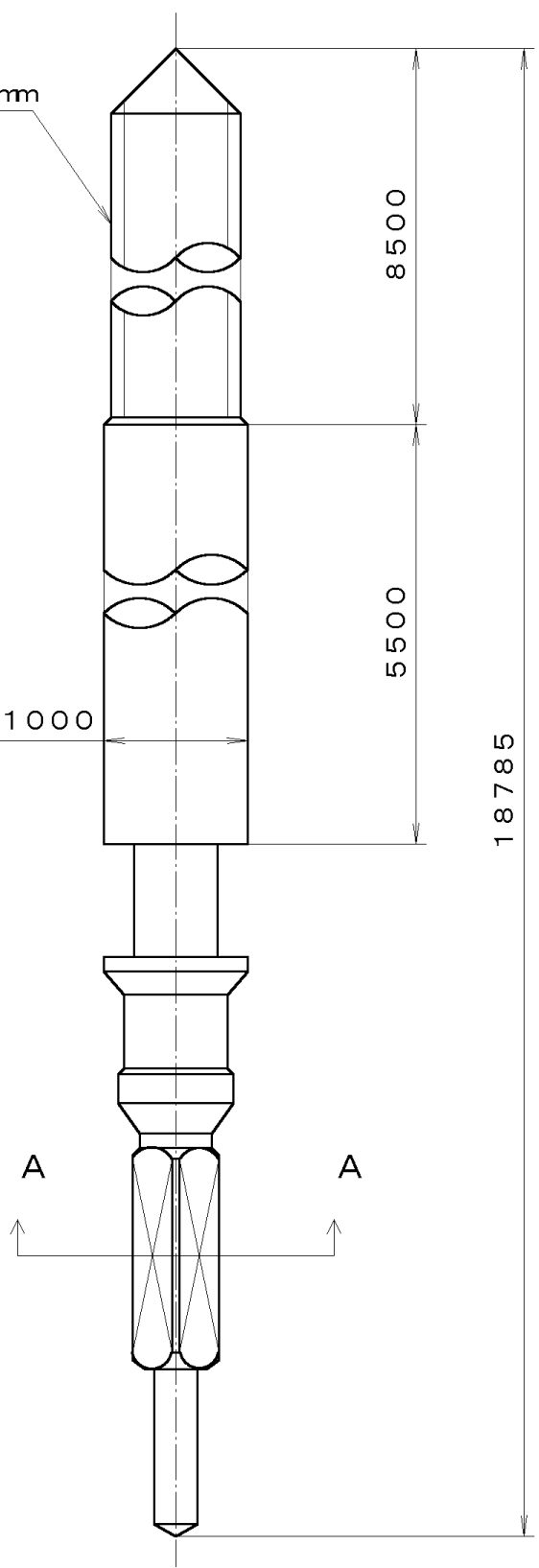
*** T I P W (01) *** (2100 1121) 00-07-06



Section A-A

S.O. 9, P=0. 225mm

Φ 1000



7			Quantity		Cal. No. :
6			Unit	1/1000 mm	
5			Scale	20:1	Parts:
4			Date		065-453
3			Drawn		
2			Checked	T. Hiruta	Name:
1			Approved		SETTING STEM
Material					Drawing No. : 4530S000
Heat Treatment			General Tolerances		
Hardness			Dimensions		
Plating			Angles		

CITIZEN WATCH CO., LTD.
TOKYO, JAPAN